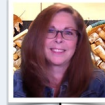


**Northwest Agency:
EdAdvance**



Kristen Kennen (Lead)
kennen@edadvance.org
W: 203-791-1904 x1189

**North Central Agency:
CREC**



Jean Barresi (Lead)
jbarresi@crec.org
C: 860.324.3391



Natasha Robinson
nrobinson@crec.org
C: 860.372.6221

**North Eastern Agency:
EASTCONN**



Sheri Lambert (Lead)
slambert@eastconn.org
W: 860 455-1585



Cheryl LaMothe
clamothe@eastconn.org



**Southwest Agency:
CES**

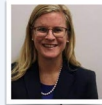


Christina Lye (Lead)
lyec@cestrumbull.org
W: 203-365-8843



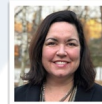
Liz Parmelee
parmelee@cestrumbull.org
W: 203-365-8913
C: 860.372.6221

**South Central Agency:
CTAEYC**



Meg Formica (Lead)
mformica@ctaeyc.org
c: 203 710 8214

**Other Supporting Agency:
ACES**



Mary Stone (Lead)
mstone@aces.org
W: 203-407-4423



Michelle DellaCamera
mdellacamera@aces.org
C: 203-843-1411

**Southeast Agency:
LEARN**



Alison Zanardi (Lead)
azanardi@learn.k12.ct.us
W: 860-434-4800 x184



Lynn DePina
ldepina@learn.k12.ct.us
W: 860-434-4800 x254

AQIS is funded by the CT OEC in partnership with the RESC Alliance and CTAEYC.